



Mitocholine™

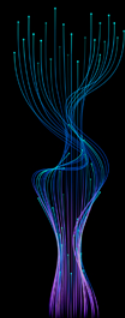
A Healthy Brain For Life

Helping to solve Cognitive Decline



Presented by:

- Larisa Andreeva, CEO
- Simon Baldry, COO
- David Yeomans, Head of Finance



The Problem

Trebles in 30 years

The total number of
people with dementia

50M
2020



152M

2050



\$1.1TN

Alzheimer's is the
most expensive
disease in America:
cost of care is
projected to reach
\$1.1 trillion by 2050.

2050

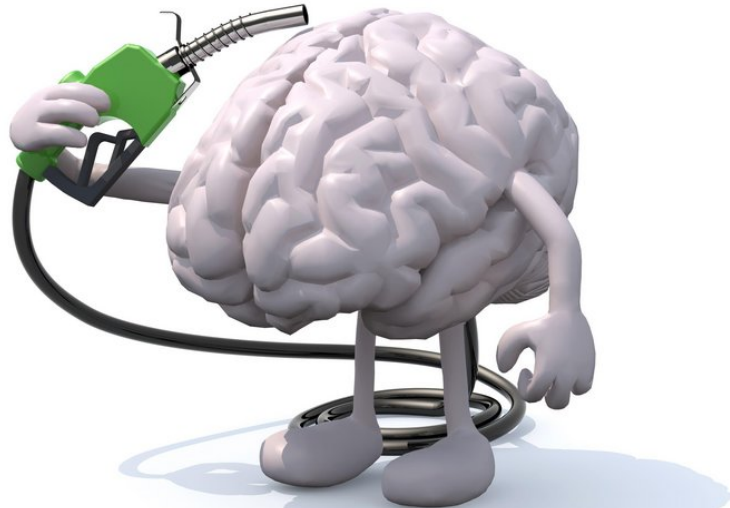


The Science

Insufficient Energy Supply



Mitocholine™

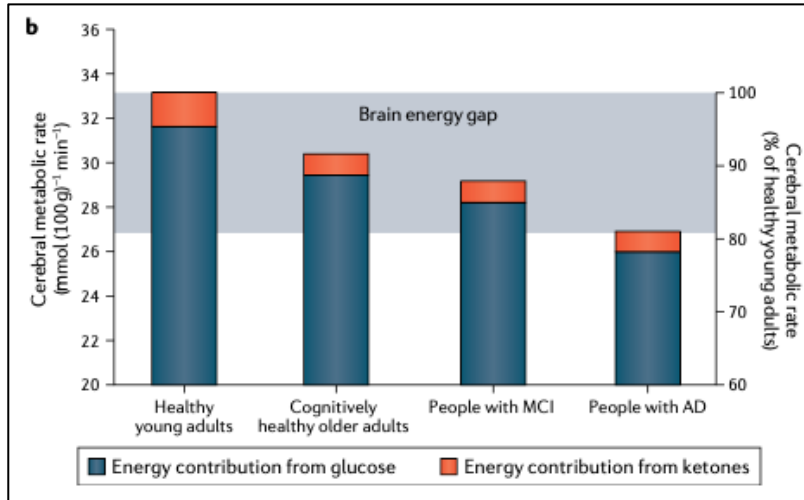


Brain Energy Gap

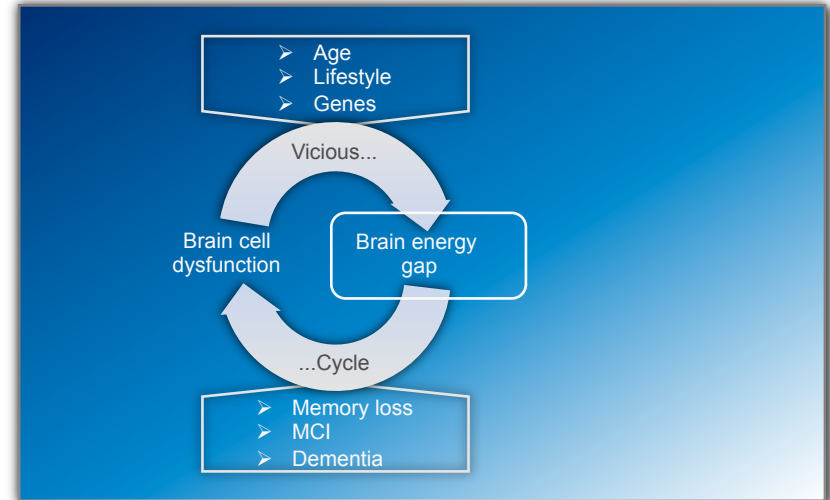
A key factor in cognitive decline



Mitocholine™

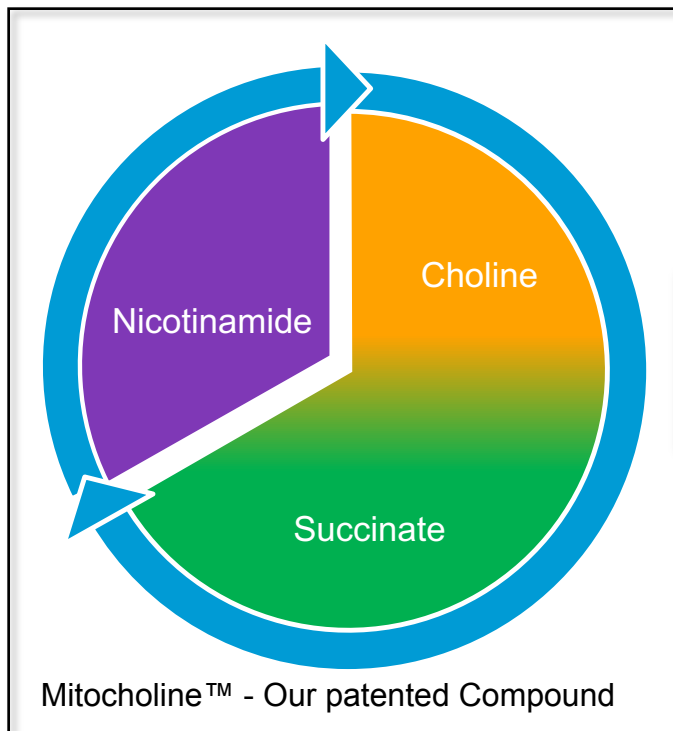


Source: Stephen C. Cunnane et al, Brain Energy Rescue, Nature Review



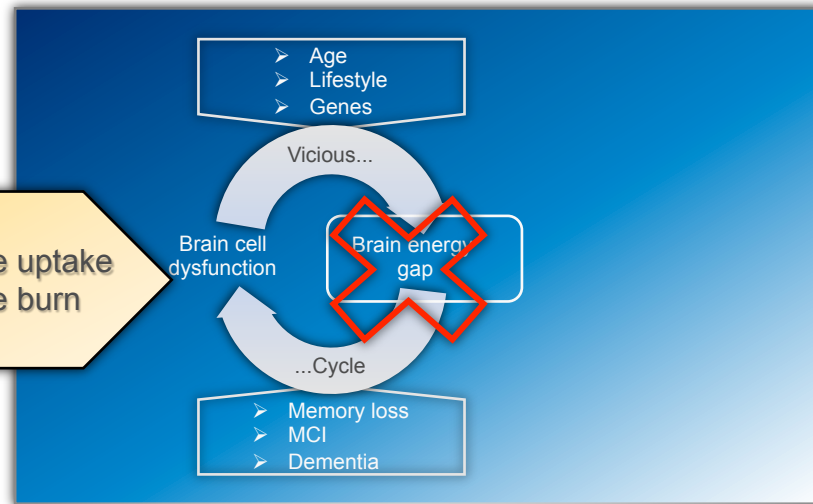
The Solution

Mitochondoline™ - Breaks the Vicious Cycle



Improves

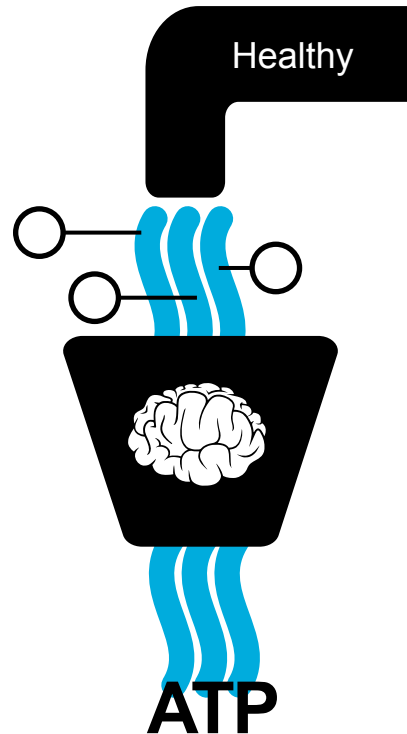
- Glucose uptake
- Glucose burn rate





Mitocholine™

All neurodegenerative aging diseases have one thing in common: decreased levels of ATP:

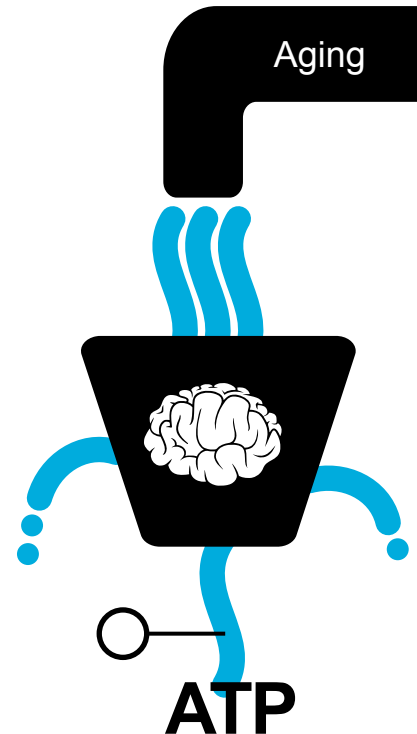


ATP is the brain's energy currency.

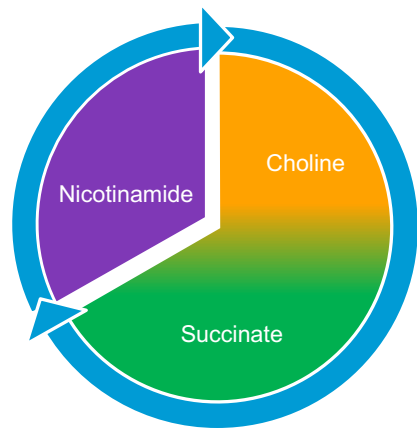
If there is a dysfunction in any of these steps:

1. Glucose uptake
2. Functioning of the mitochondrial TCA cycle
3. ATP production in the electron transport chain ...
4. ... then there is going to be less ATP production.

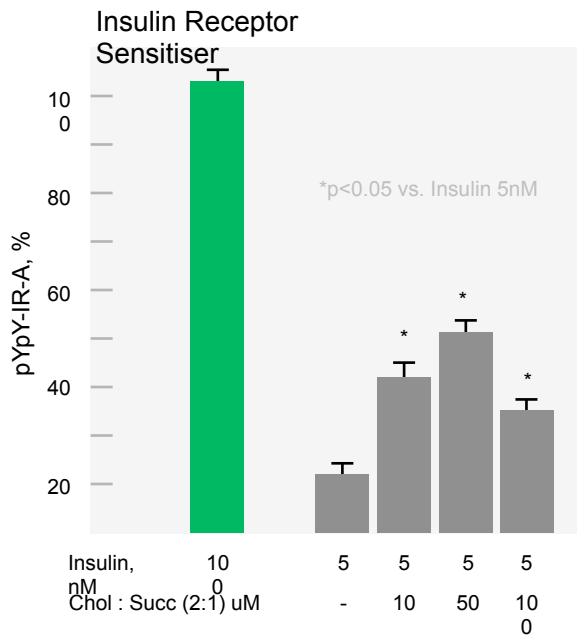
This is known as "impaired energy metabolism" and causes the brain energy gap.



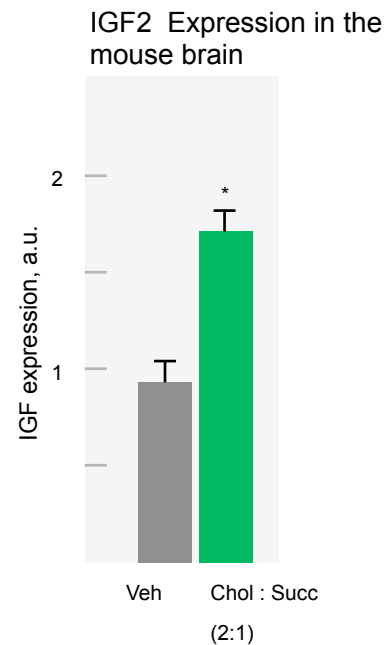
Our evidence to date: 'choline succinate salt 2:1'



Mitocholine™ - Our patented Compound



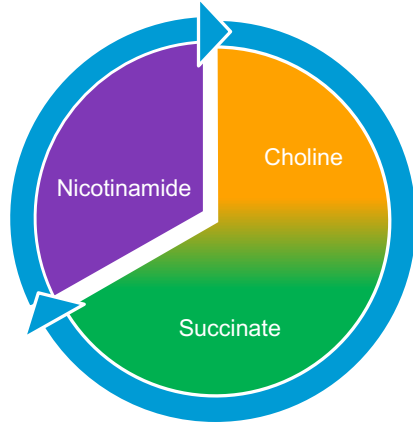
Primary neuronal culture



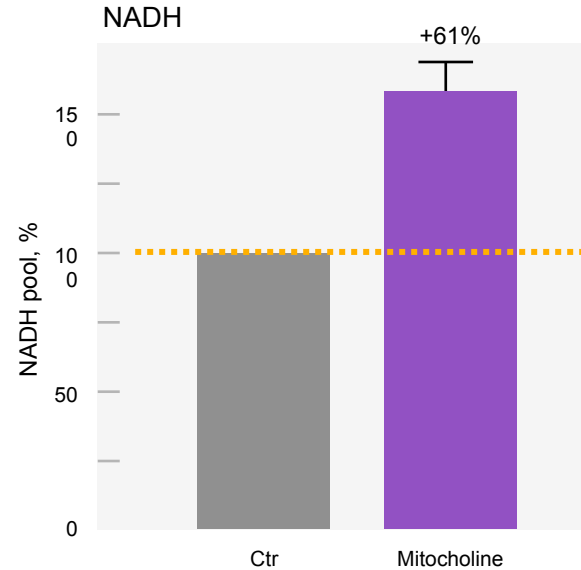


Mitocholine™

Mitocholine evidence to date: **nicotinamide**

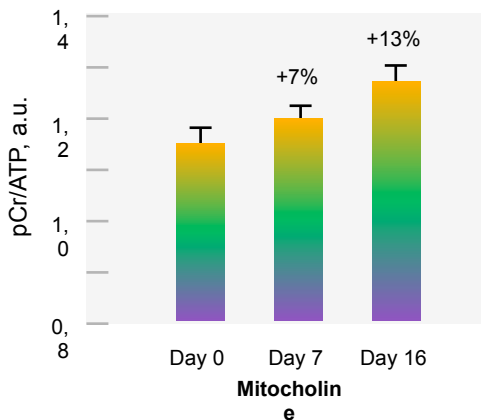
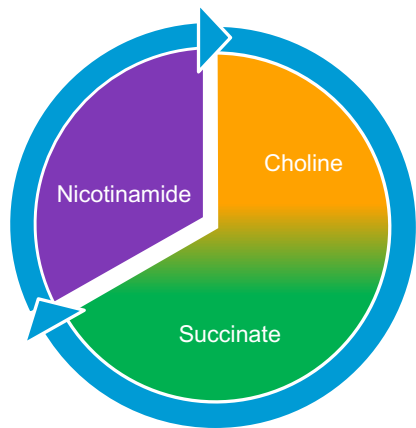


Mitocholine™ - Our patented Compound

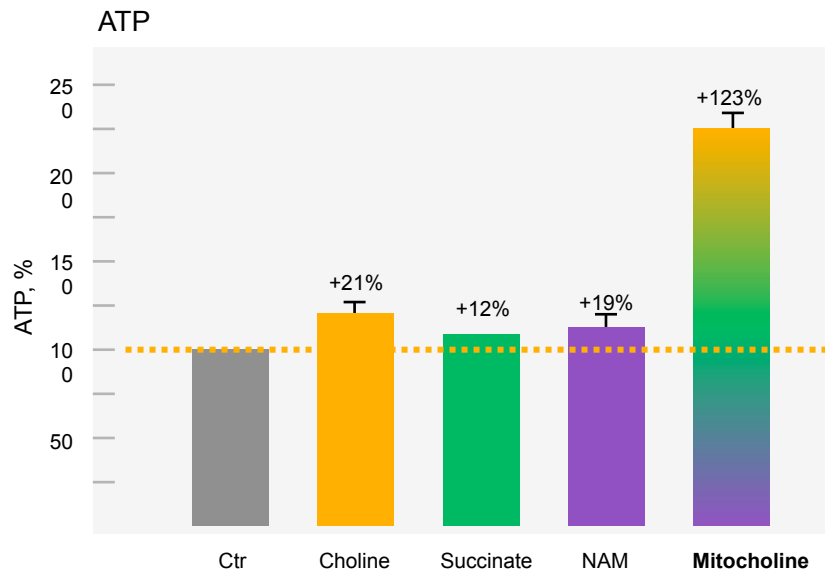


Mitocholine increases NADH pool by 61%.

Mitochondoline - A synergistic effect:

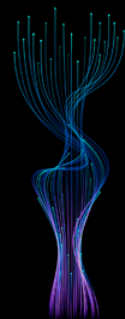
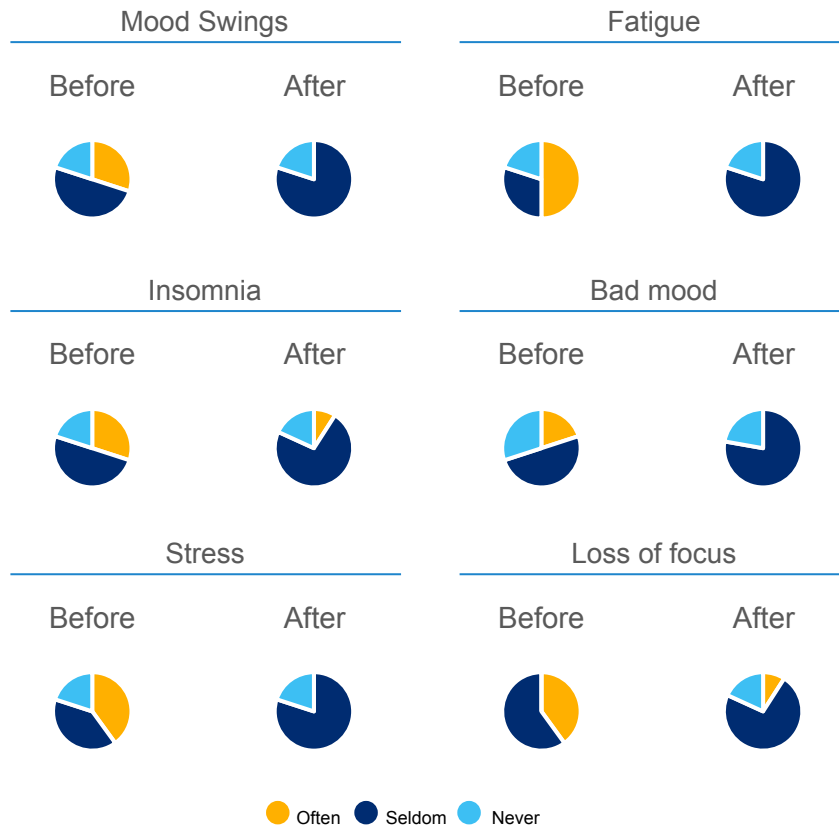


With Mitochondoline taken once every two weeks the brain energy status increases (analysed using P magnetic resonance spectroscopy).



Our pilot results in healthy adults show improvement in cognitive outcomes:

- We have already conducted an open-label, observational clinical study in healthy adults aged 21-63 years, 12 wks; N = 20
- Mitocholine was taken daily for twelve weeks
- Results demonstrated clinical improvement in:
 - Mood and depression
 - Insomnia
 - Focus
 - Stress
- All of these are factors associated with poor cognitive function
- Pilot trial results demonstrated good safety and tolerance profile



Strong IP

IP

We have good protection with composition and method patent claims:

- Patent Application Filed 2017
- IPA* search found invention novel & non-obvious
- Patent Grants expected from 2022
- Freedom to Operate
- IP Protection until 2038

*IPA – International Patent Authority

Regulatory

Regulatory Approval / Activity		Time
Dossiers to FDA (US) & EFSA (EU)	C	July 2020
Self GRAS (US) Approval	C	October 2020
GRAS (US) “No Question letter”	E	Q4 2021
EFSA (EU) Approval Novel Food	E	Q4 2021

C: Completed E: Expected

Clinical Trial Plan

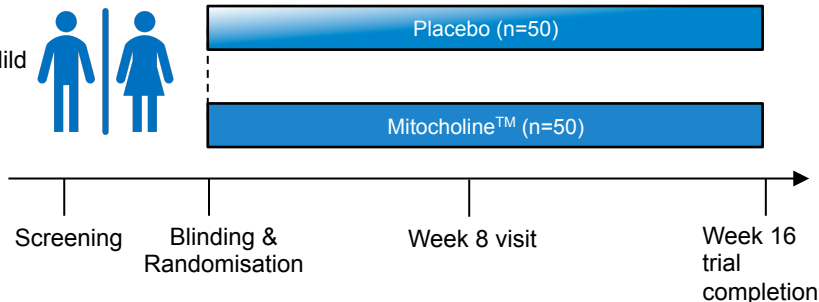
De-risked and Clear

World class CRO:



Trial subjects

- ~100 (male & female) with Mild Cognitive Impairment (MCI)
- 55 to 85 years old

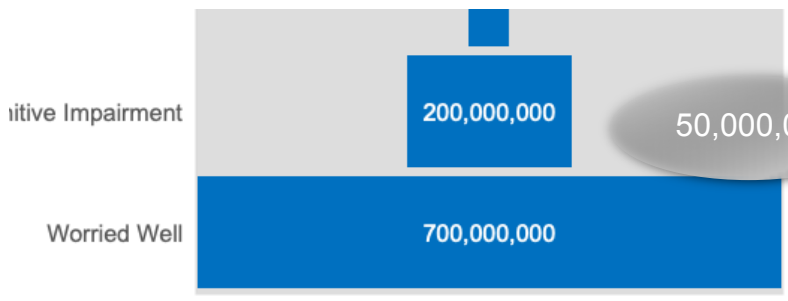


Measured outcomes

- Episodic memory (FCSRT test)
- Brief visual memory (BVMTR test)
- Executive function
- Attention
- Processing speed
- Verbal Fluency
- Sleep quality
- Various exploratory biomarkers

The Opportunity

Dementia #1 Health Concern for 42% of Population



Our Target Markets

1

2

Medical foods are a growing market that has fewer barriers to entry than pharmaceuticals.

The global nutrition market is projected to grow to \$17.85 billion from \$14.58 billion in 2021: 4.13% CAGR

\$14.6B

2021

\$17.9B

2026

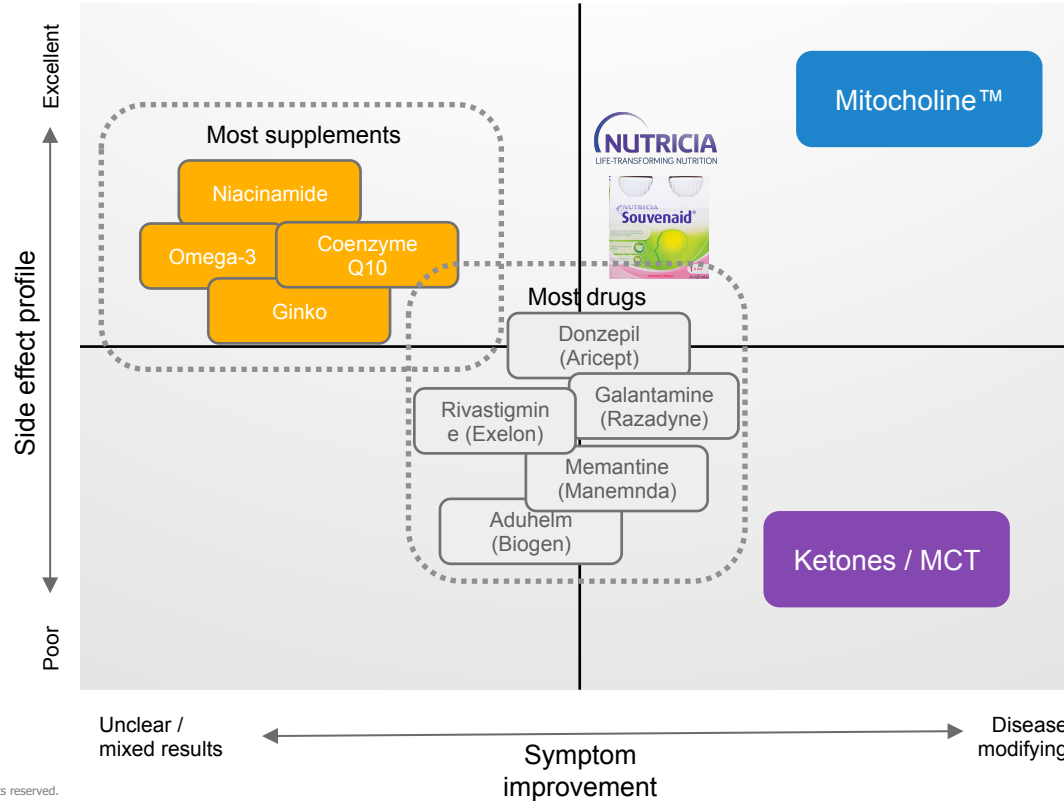


Competition

Mitocholine™ - The only functional remedy without side effects



Mitocholine™

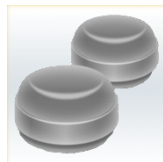


Commercialisation

Primary target markets are medical foods/FSMP and nutritional products



Medicated
Drinks



Medicated Gummies
& Lozenges



Nutritional Dairy
Products



Nutritional
Beverages



Capsules
& tablets*

- Nutritional approach ideally suited for long-term-, chronic interventions...
- ...with high-end categories by strategic partners with **global** reach

Route To Market

Strategic Partnerships with Global Medical Food Corporations



**Clinical
Trial**



**Licensing
deals**



**New medical
food**



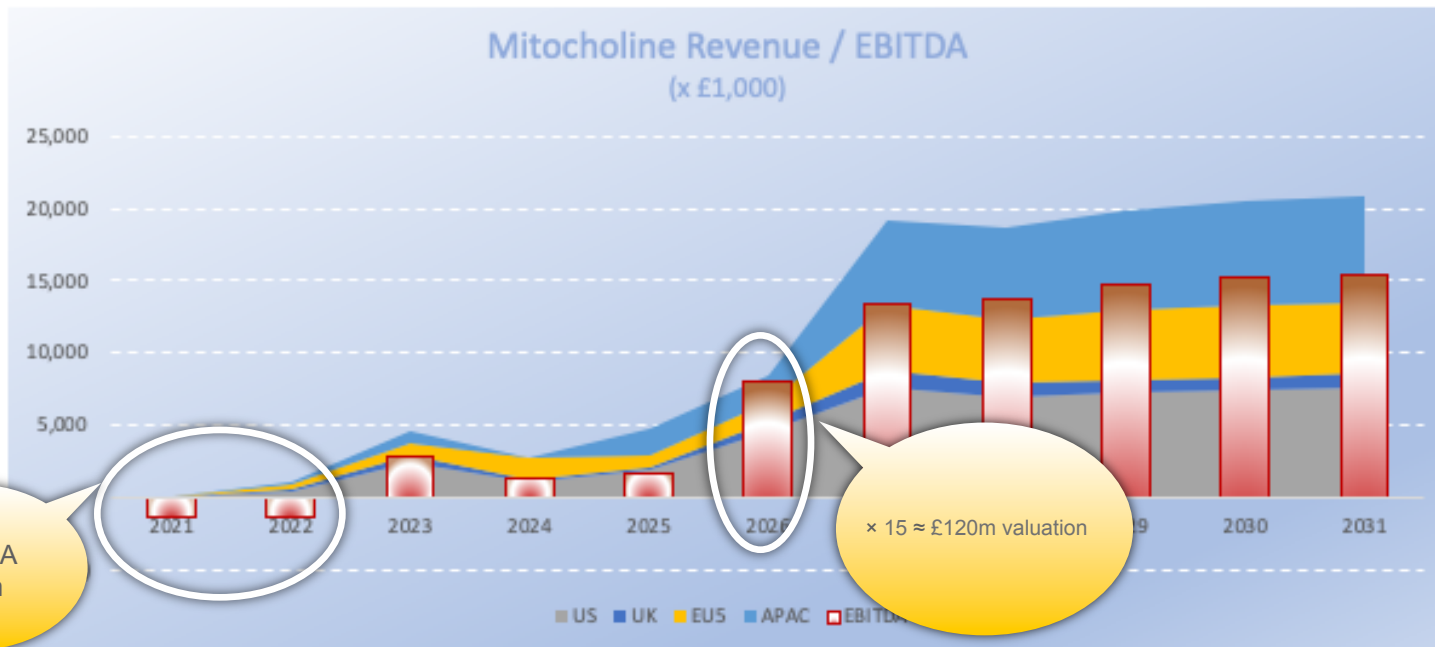
**Product
marketing**

Clinically proven to support:

- ☒ Memory and recall
- ☒ Verbal fluency
- ☒ Task management
- ☒ Mood & depression
- ☒ Stress & insomnia

Attractive Business Plan

Based on normative Medical Food/FSMP assumptions



Round A
£3.5m

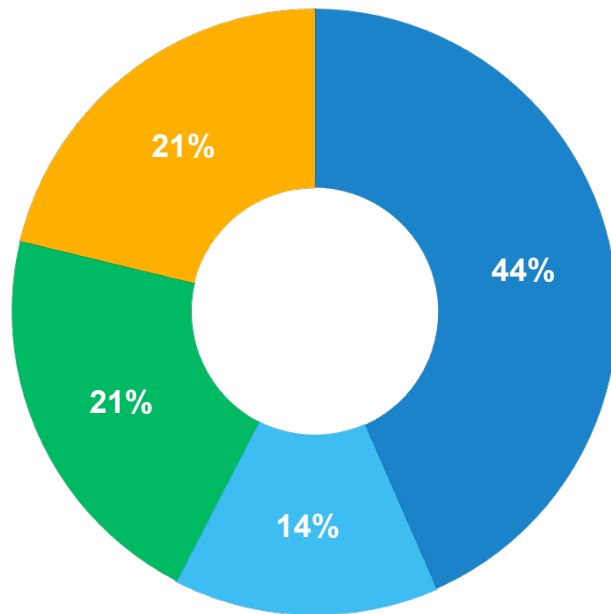
x 15 ≈ £120m valuation

- Investment of £3.5 million required to complete clinical trial and regulatory approvals
- Exit opportunities in 3 to 5 years upon completion of 1st clinical study and initial partnership deals

The Ask: £3.5m



Use of funds from this seed round



■ Clinical trial ■ Regulatory ■ Commercial Activities ■ R&D

Stage	Round A
Ask	£3.5M
Pre-money valuation	£14M
Share class	A Shares
EIS qualifying	Yes

The Team Who Can Deliver



Larisa Andreeva, PhD,
Founder/CEO

25 yrs experience biochem research and
research programme mgmt
(Imperial College London, UCL)



Simon Baldry
COO

20+ yrs experience as Managing Director /
Gen. Mgr in the Food & Drinks industry
(Coca Cola, Cadbury)



Igor Pomytkin, PhD,
Founder/Chief Scientist

35+ yrs experience in neuroscientific research,
30+ patents of which several have become
commercial products



David Yeomans
Head of Finance

10+ yrs experience in the life sciences
industry
(Quanta Dialysis, PwC)

Advisory Board



Daniel Anthony
Professor Oxford



Andrey Abramov
Professor UCL



Galina Skladchikova, PhD,
Founder, Head of IP

20+ yrs experience in biochem research,
strategic IP dev and mgmt
(Glycom, Dako, Holberg)



Christian Barnes
Dir. Licensing

15 yrs experience in product innovation
and business development.
(Nestle, Pamlab, Akebia)



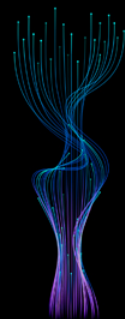
Torbjorn Tenmann
Investor & Chairman

Serial entrepreneur with 25+ yrs
experience in growing B2B startups into
market leaders
(Metier, Advent)



Bruce McConnell
Advisor

25+ yrs experience in Bus. Dev. In
Medical Foods industry
(Nestlé, Glycom)



A Healthy Brain For Life



Mitocholine™

- Will deliver massive improvement in quality of life for patient and family
- A high-, unmet-, growing need.
- A breakthrough solution with excellent initial data and IP.
- Unparalleled benefits for society
- Lower risk-, rapid (non-pharma) route to market.
- A team who can deliver
- Many-fold ROI opportunity with superb exit opportunity in 3 to 5 years.



Thank you!

