

Dart Mining NL

(ASX Code DTM)

Master Investor Conference
London April 6 2019

James Chirnside
Chairman & Managing Director



Forward Looking Statements Caution

Certain statements contained in this document constitute forward looking statements. Such forward-looking statements are based on a number of estimates and assumptions made by the Company and its consultants in light of experience, current conditions and expectations of future developments which the Company believes are appropriate in the current circumstances. These estimates and assumptions while considered reasonable by the Company are subject to known and unknown risks, uncertainties and other factors which may cause the actual results, achievements and performance of the Company to be materially different from the future results and achievements expressed or implied by such forward-looking statements. Investors are cautioned that forward looking information is no guarantee of future performance and accordingly, investors are cautioned not to place undue reliance on these forward-looking statements.

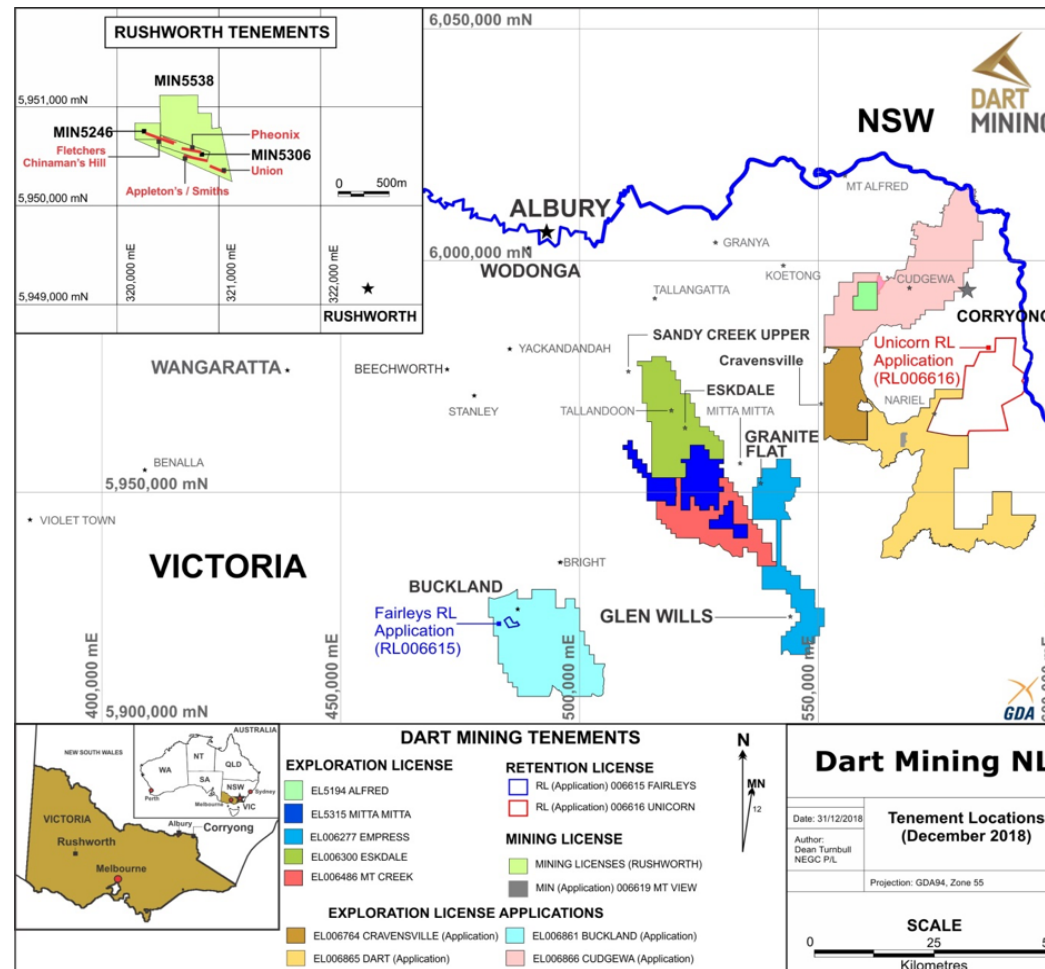
Company Profile

Listed	ASX 2007
Directors	James Chirnside Luke Robinson Denis Clarke
Issued Capital	928 million shares
Market Cap.	A\$7 million
Cash (3/12/18)	A\$~ 500k
Shareholders	Top 20 > 50%

Exploration Profile

2008	Discovered the major Mt. Unicorn Molybdenum Porphyry Deposit in N E Victoria.
2009-2015	Exploration and Pre-development Mt Unicorn Multiple gold projects explored
2015	Pre-development work on Mt Unicorn suspended due to collapse in molybdenum price
2016	Discovered first significant lithium-mineralised pegmatites in Victoria
2018	Extensive regional aerial and ground surveys to locate and sample pegmatites
2019	Drilling of pegmatites commenced late March Expansion of gold exploration

Project Locations



Exploration Projects

2,400 Square km

LITHIUM PROJECTS (LITHIUM, TIN, TANTALUM)

- Dorchap North
- Dorchap South

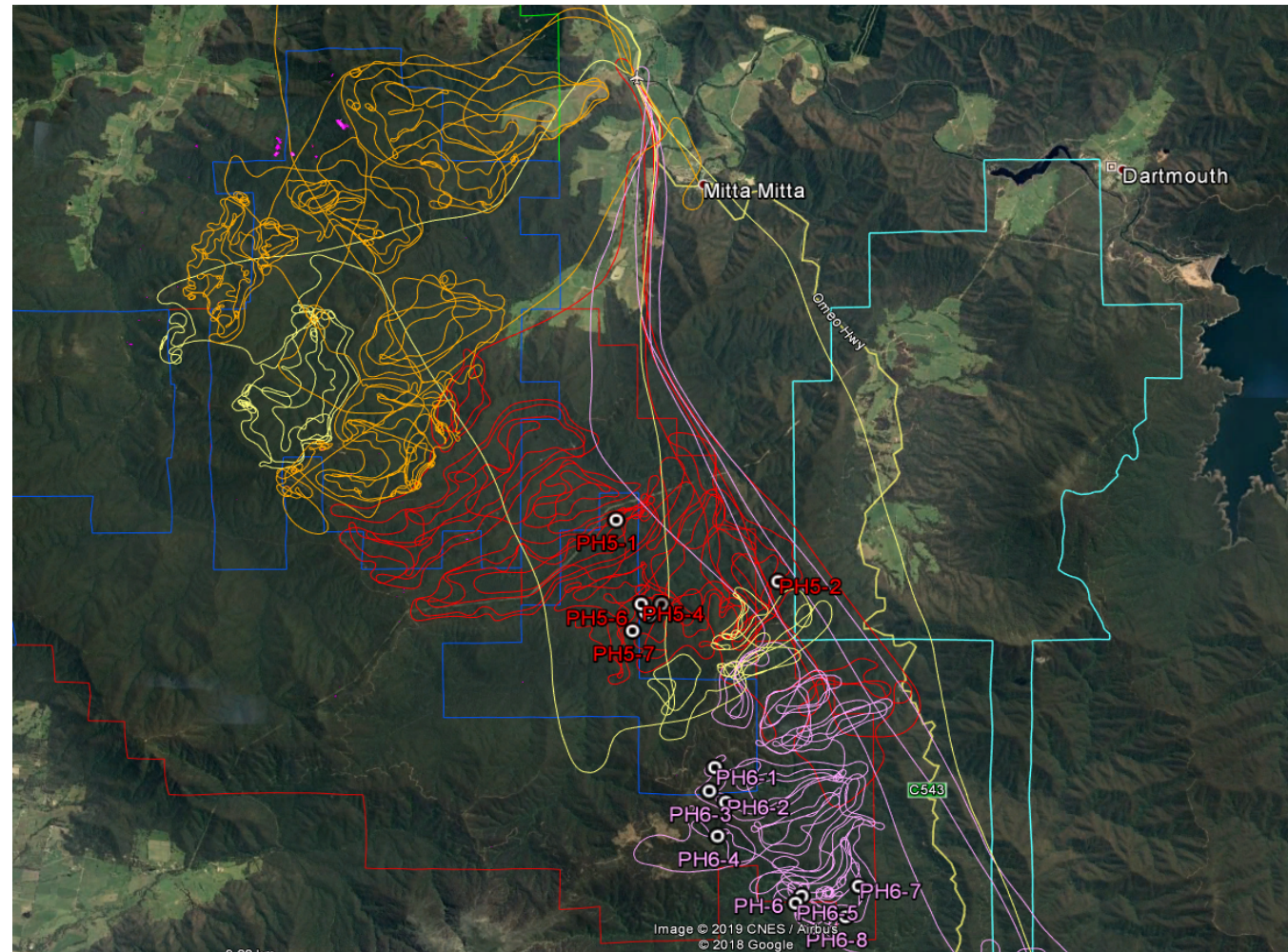
PORPHYRY PROJECTS (COPPER, GOLD, MOLYBDENUM)

- Staceys
- Empress
- Gentle Annie
- Mt Unicorn
- Mt Morgan
- Copper Quarry

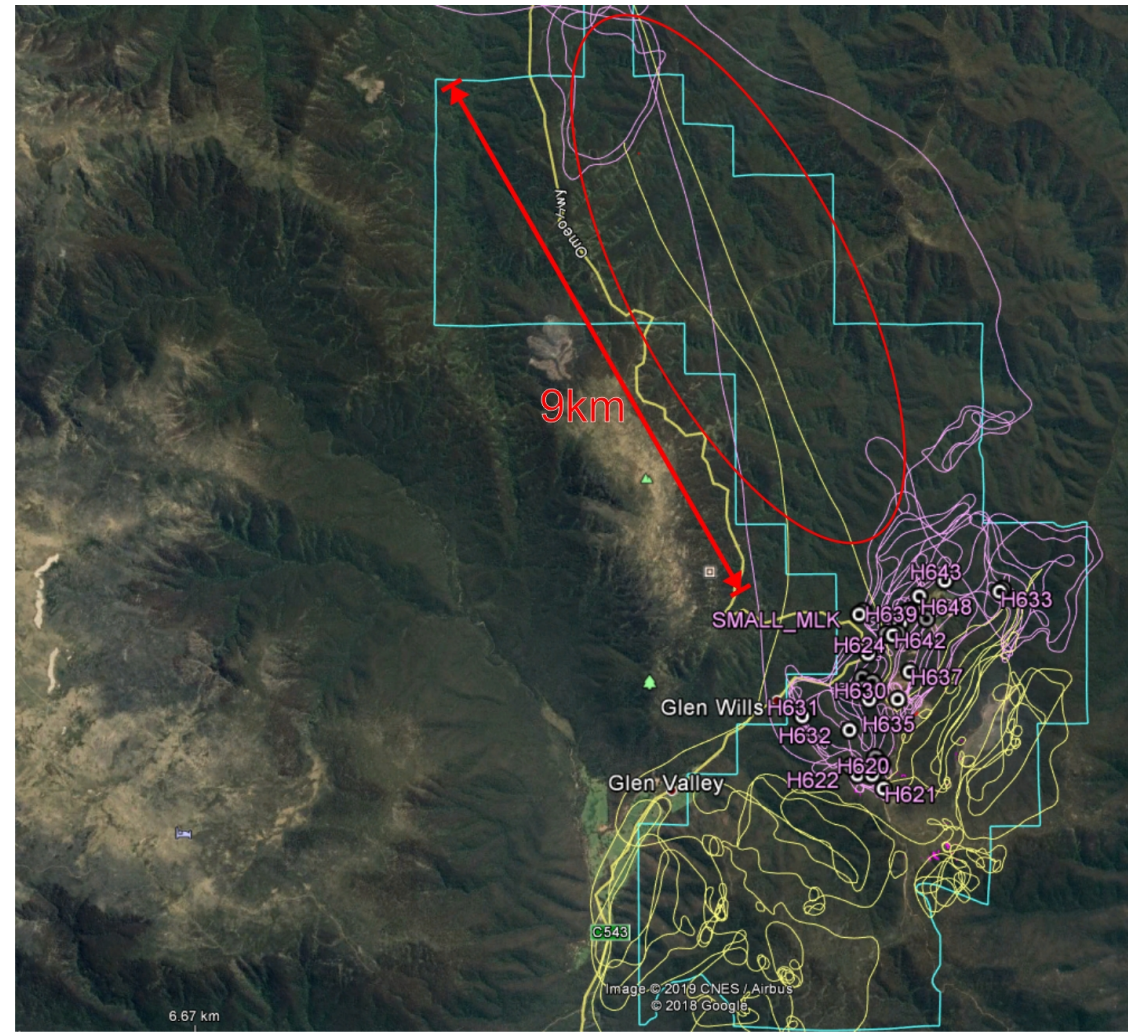
GOLD PROJECTS

- Buckland
- Sandy Creek
- Empress
- Rushworth
- Mt View
- Onslow Reefs

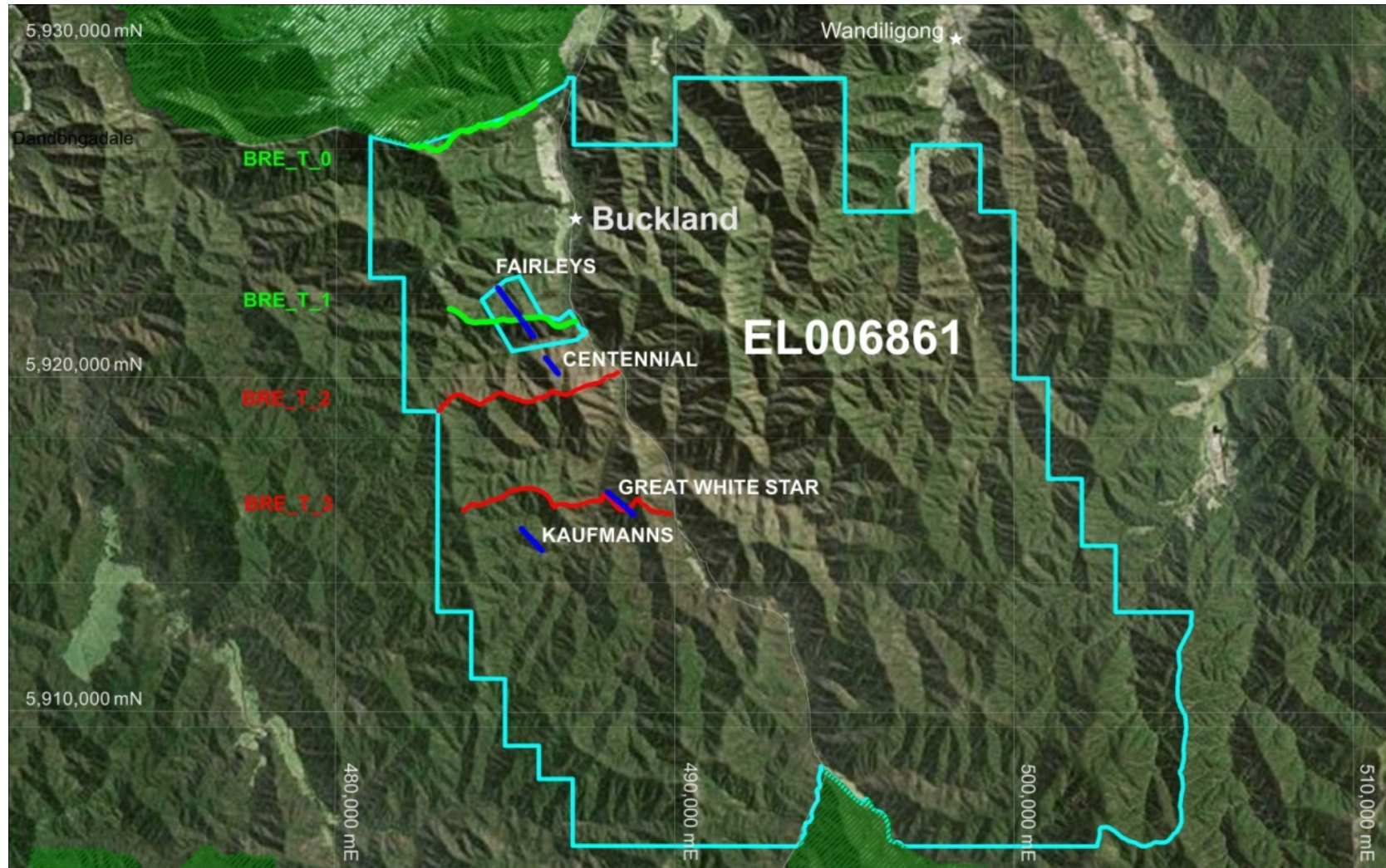
Dorchap North



Dorchap South



Buckland Gold



Dart Metals Exposures and Outlook

Dart Energy, Base and Precious Metal Exposures	Demand	Supply	Outlook
Lithium (LiO ₂)	Positive	Constrained	Constructive
Tantalum (TaO ₂)	Positive	Abundant	Negative
Tin (Sn)	Positive	Constrained	Constructive
Molybdenum (Mo)	Neutral	Abundant	Neutral
Copper (Cu)	Positive	Constrained	Constructive
Zinc (Zn)	Positive	Constrained	Constructive
Gold (Au)	Positive	Balanced	Constructive
Silver (Ag)	Neutral	Balanced	Neutral

Summary

- Junior Explorer with extensive experience and demonstrable track record in mineral discovery
- Geographically focused in the under-explored state of Victoria
- Commanding tenement holding in highly mineralised region of Australia
- Leveraged position relative to market valuation
- Victorian gold interest and activity is gaining momentum as mining-majors position themselves
- Producer margins are excellent with A\$ Gold at historic all-time highs
- Broad scope for third party farm-in deals
- Efficient team of Commercial and Technical personnel
- Supportive and well resourced shareholder register

Document Disclaimer

The information contained in this document is disclosed to you by Dart Mining NL (ACN 119 904 880) (the "Company").

Nothing in this document shall form the basis of any contract or commitment, or constitutes investment, financial product, legal, tax or other advice. The information in this document does not take into account your investment objectives, financial situation or particular needs.

The Company has prepared this document and is not aware of any errors in this document, but does not make any recommendations or warranty, express or implied concerning the accuracy of any forward looking statements or the likelihood of achievement or reasonableness of any assumptions, forecasts, prospects or returns contained in the information. Such assumptions, forecasts, prospects or returns are by their nature subject to significant uncertainties and contingencies.

This document is intended to provide background information only and does not purport to make any recommendation upon which you may reasonably rely without taking further and more specific advice. Potential investors should make their own decision whether to purchase any share in the Company based on their own enquiries. Potential investors are advised to seek appropriate independent advice, if necessary, to determine the suitability of the investment. An investment in the Company should be considered speculative.

This document is not a prospectus or other disclosure document.