



VectorVest®

Welcome

How to Quickly and Easily find
Winning Shares on the LSE

VectorVest

Disclaimer

- The VectorVest Program ("the System") which we promote is not intended to provide you with specific or personalized advice. In all circumstances where you are looking to apply the System to your own personal needs you should consider whether you should first seek advice from a suitably qualified investment professional.
- Figures and information provided refer to the past and past performance and are not a reliable indicator of future results. Where stocks are quoted in foreign currencies, returns may increase or decrease as a result of currency fluctuations. In the event that you, as a recipient of this presentation, have any doubts as to the suitability of the investments or services promoted you should seek advice from a suitably qualified investment professional.
- You should be aware that the value of shares and other stocks may rise or fall. The rules on tax can change, and these changes may have an influence on the effectiveness of the System in the future. It is for you, as the tax payer, to assess the System's effectiveness throughout the process. Some assets are more readily realizable than others, and you should bear in mind that it may be difficult to deal in or obtain reliable information about their value. You should always take account of dealing charges. In addition to any initial charge quoted there may also be a bid/offer spread or dilution. Investments in options and other forms of derivatives may expose you to a higher degree of risk given market circumstances relative to other forms of quoted investments.
- The System even if used in its entirety, cannot be guaranteed to provide specific returns in the short, medium or long term and you should bear in mind that individual securities may and can fluctuate considerably in value from day to day. The System has been designed without any reference to the specific interests of a particular investor. We reiterate, when using the System, you must take into account your own specific needs and liabilities.
- The System is provided for UK clients only. This financial promotion has been approved by European Financial Publishing Ltd trading as VectorVest UK which is authorized and regulated by the Financial Services Authority under Register No 543038. European Financial Publishing Limited is a company incorporated in Scotland under Company Number SC357322 with its registered address at Exchange Tower, 19 Canning Street, Edinburgh EH3 8EH.

Agenda

Welcome

The VectorVest System of Analyzing Shares

Market Timing

A Safe and Robust Worry Free Investing Strategy

***Invest with confidence and consistently outperform
the market in less than 10 minutes a day.***



The VectorVest System

The VectorVest System for Analyzing Stocks

The VectorVest System

Value goes up when:

- Earning go Up
- Inflation goes Down
- Interest rates go Down

The VectorVest System

VectorVest believes every Investor
should know:

What a stock is Really Worth.

How Safe it Is.

When to Buy, Sell or Hold.

Relative Value

An Indicator of Long-Term Price Appreciation Potential

Price, Value, Earnings Growth, Relative Safety (Risk), and Corporate Bond Rates are used to compute Relative Value.

Relative Safety

An Indicator of Risk

Consistency and Predictability of Financial Performance are the Primary Factors in Assessing Relative Safety.

Relative Timing

An Indicator of Short-Term Price Trend

The Direction, Magnitude and Dynamics of Price History are used to determine Relative Timing.

VST - Vector

The Master Indicator

VST-Vector combines RV, RS and RT into a single comprehensive indicator.

This combination incorporates both fundamental and technical analysis.

Stop Price

An Indicator of When to Sell or Cover a Position

A 13-Week Moving Average of Closing Prices
adjusted for the fundamentals of RV and RS is
used to compute Stop-Price.

The VectorVest System

Buy, Sell or Hold Criteria

B

1. Price > Stop Price
2. VST > 1
3. RT > 1
4. Price must be diverging away from Stop Price

S

Price < Stop Price

H

Price > Stop, but any one of the other three factors needed to receive a Buy are not met.

Market Timing

How to Accurately Determine
Market Direction

The VectorVest System

VectorVest believes in

Buying rising stocks in rising markets and
Selling falling stocks in falling markets.

Market Direction

Direction is the key to making money
in any market.

“Being on the wrong side of the market is the
worst thing that can happen to an investor.
It doesn't have to happen to you.”

-P. 90 - Stocks, Strategies and Common Sense

Big Mistake Investors Make:

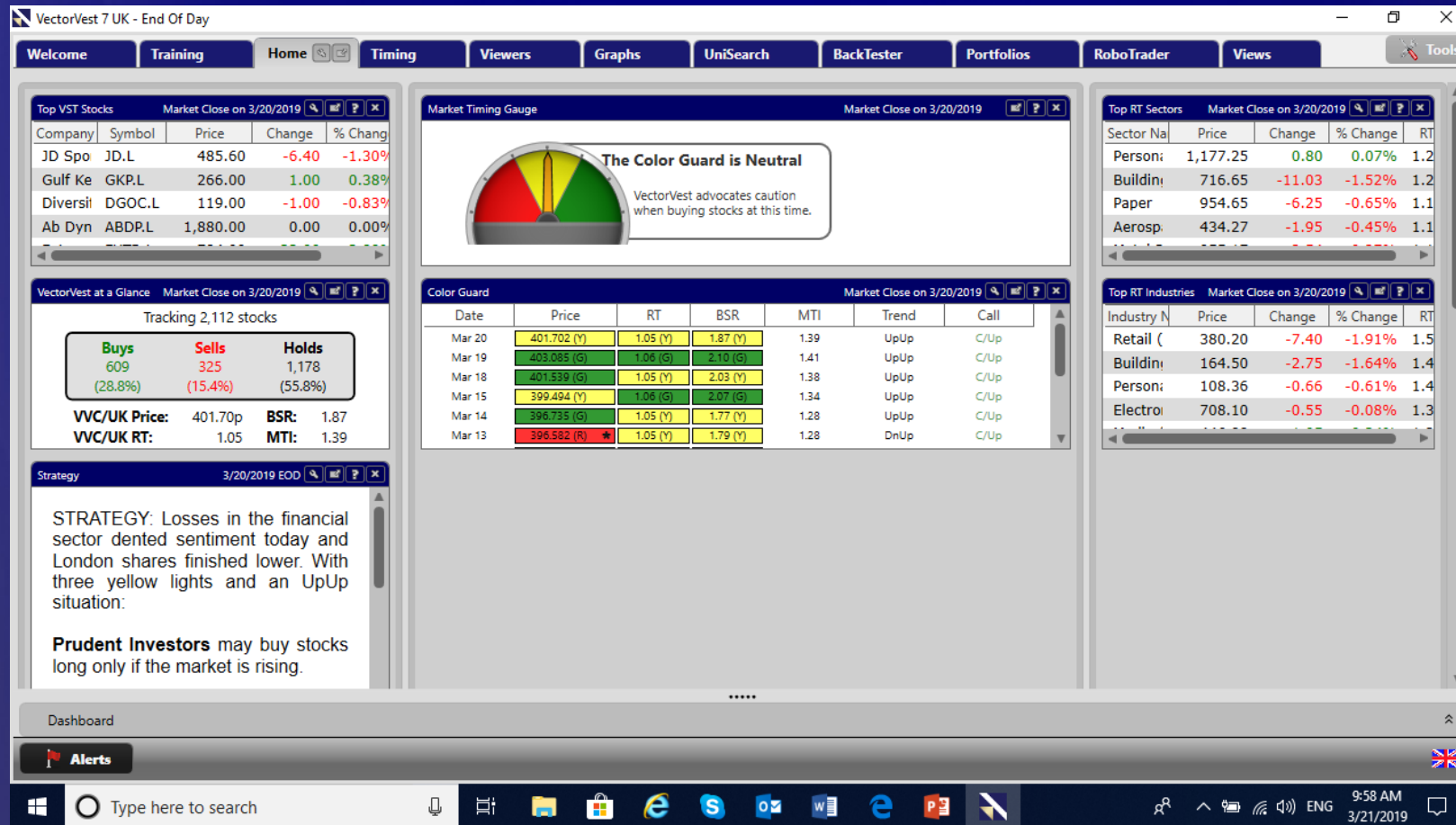
You Ignore Market DIRECTION!



Buy & Hold Is The Way To Go!



Market Direction



Market Direction



Market Direction



How to Build and Manage a Worry-Free Portfolio

How to Build and Manage a Worry-Free Portfolio



***“Good portfolio management starts with
buying the right stocks.”*** –Dr. Bart DiLiddo



How to Build and Manage a Worry-Free Portfolio

The Parameters need to be robust, tested and realistic.

The aim is to have minimal trades per year while maximizing returns.

The portfolios need to be robust in terms of being able to handle a large portfolio through to smaller portfolios

Worry Free Investing - Charts

- RS is the key – want RS to hold well above 1
- Want to ensure Earnings Hold up
- GRT to be above inflation and interest rates

Worry Free Investing UniSearch

Long-Term Winners - RS Desc 2

Run Search

RS DESC, Symbol ASC

Top 30

Return: Stocks

QuickTest Top: 10

Graph Selected

QuickFolio Top:

3/8/2019

Parameters

	Date/Time	Parameter	Operator	Value
▶	Time of Search	Stock Price - (Actual)	>=	50
	Time of Search	Stock AvgVol - (50 day moving A...	>=	50000
	Time of Search	Stock Exchange	<>	AIM Exchange
	Time of Search	Stock Price - (Actual)	<=	Stock Value
	Time of Search	Stock REC - (Recommendation)	<>	Sell
*				

Worry Free Market Timing

The Worry Free Investing makes use of the Confirmed Signals

- 1.The confirmed signals are our most conservative of all timing signals
- 2.You will get into the market later and out of the market later.
- 3.By getting into the market later – you are less likely to experience false signals into the market
- 4.Getting out of the market later is protected through money management and stop losses.

WFI summary



WFI performance in 2019

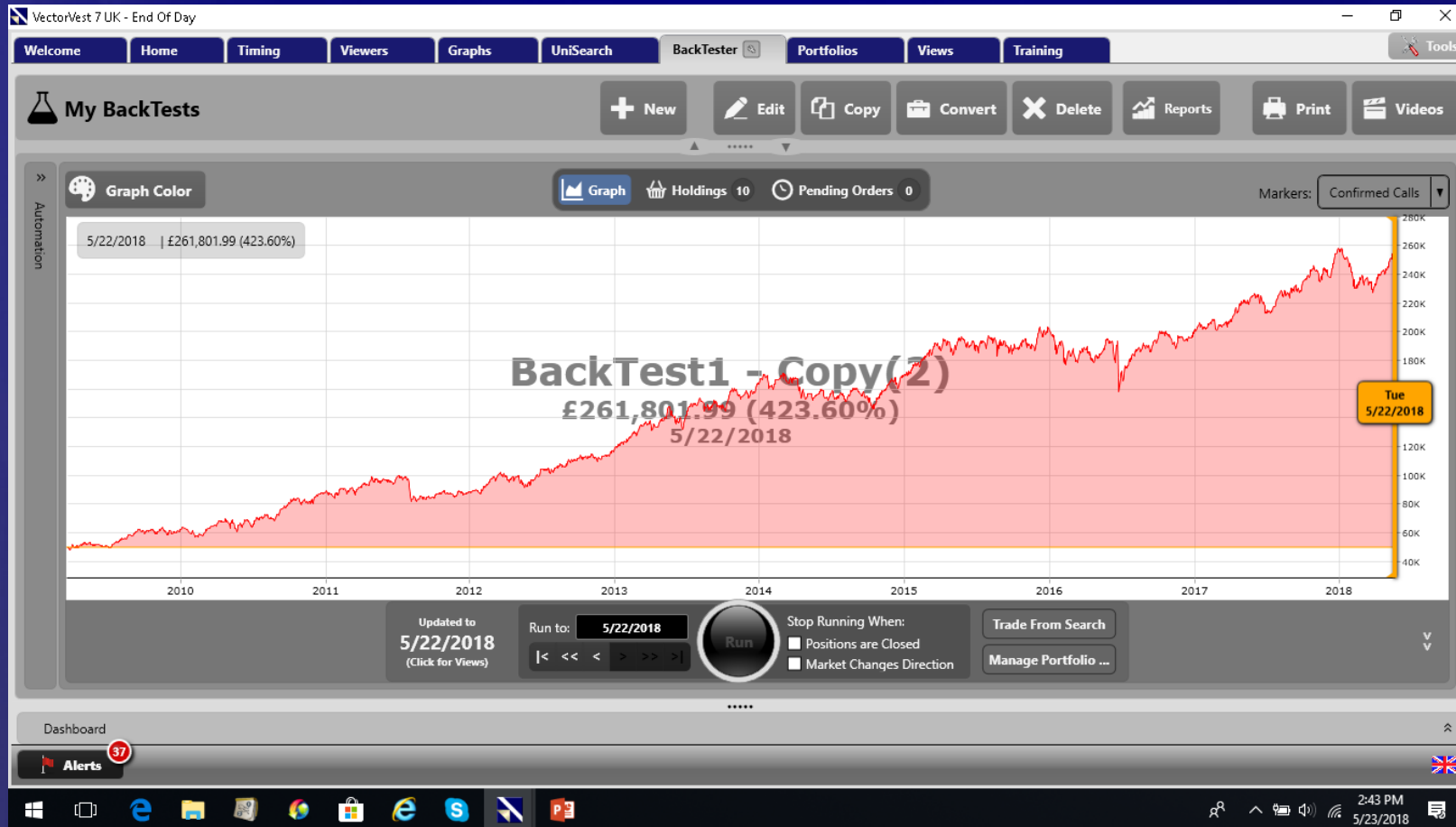
Record Count - 10 (10 Winners, 0 Losers, 0 Even)				
Symbol ▼	Begin Price	End Price	% Price Cha	Total ARR
JD.L	355.40	485.60	36.63%	173.78%
BWY.L	2,552.00	3,016.00	18.18%	86.25%
PSN.L	1,940.50	2,212.00	13.99%	66.37%
RDW.L	488.20	616.50	26.28%	124.66%
BDEV.L	462.20	595.00	28.73%	136.29%
LIO.L	596.00	627.00	5.20%	24.67%
ADM.L	2,027.00	2,146.00	5.87%	27.85%
HWDN.L	436.20	500.60	14.76%	70.03%
FERG.L	4,994.50	5,328.00	6.68%	31.67%
TRI.L	187.00	189.50	1.34%	6.34%
Average:				
	p1403.90	p1571.62	15.77%	74.79%
Compare To:	VVC/UK			
Symbol	Begin Price	End Price	% Price Cha	Total ARR
VVC/UK	374.356	401.702	7.30%	34.65%

WFI USA track record

THE BEST OF VECTORVEST



UK WFI since March 2009



Mission Statement

Our Mission is to provide the best
stock market guidance available
anywhere at any price.

VectorVest Contact Information

Product Support and Training:

E-mail: support@vectorvest.com

David.paul@vectorvest.com

0800 014 8974