



The Future of Onshore UK Oil?

Huntington Beach California – 1920's

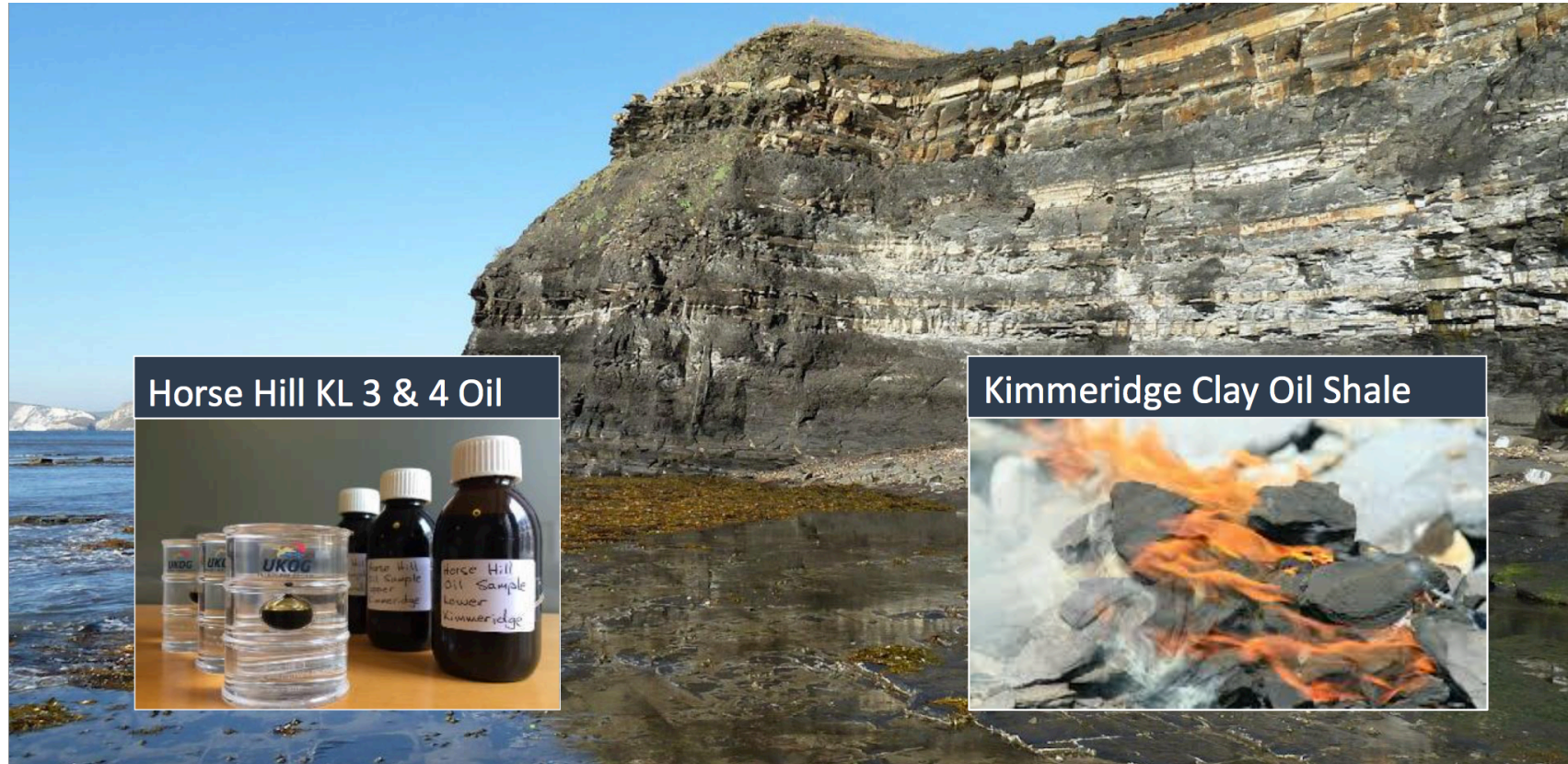
UK Onshore Oil Production Focus

Weald Basin

- 10% of Brockham Onshore Oil Field.
- 20% (option to increase to 30%) of Lidsey Oil Field.
- 10% of Horse Hill Developments – “Gatwick Gusher”.
- 5% of Isle of Wight.

Weald Basin a Game Changer!

Kimmeridge Geology



TOTAL WEALD

124 billion barrels OIP

19.5 billion barrels Kimmeridge Limestone

NUTECH Study area

1261 Sq miles

Brockham Oil Field

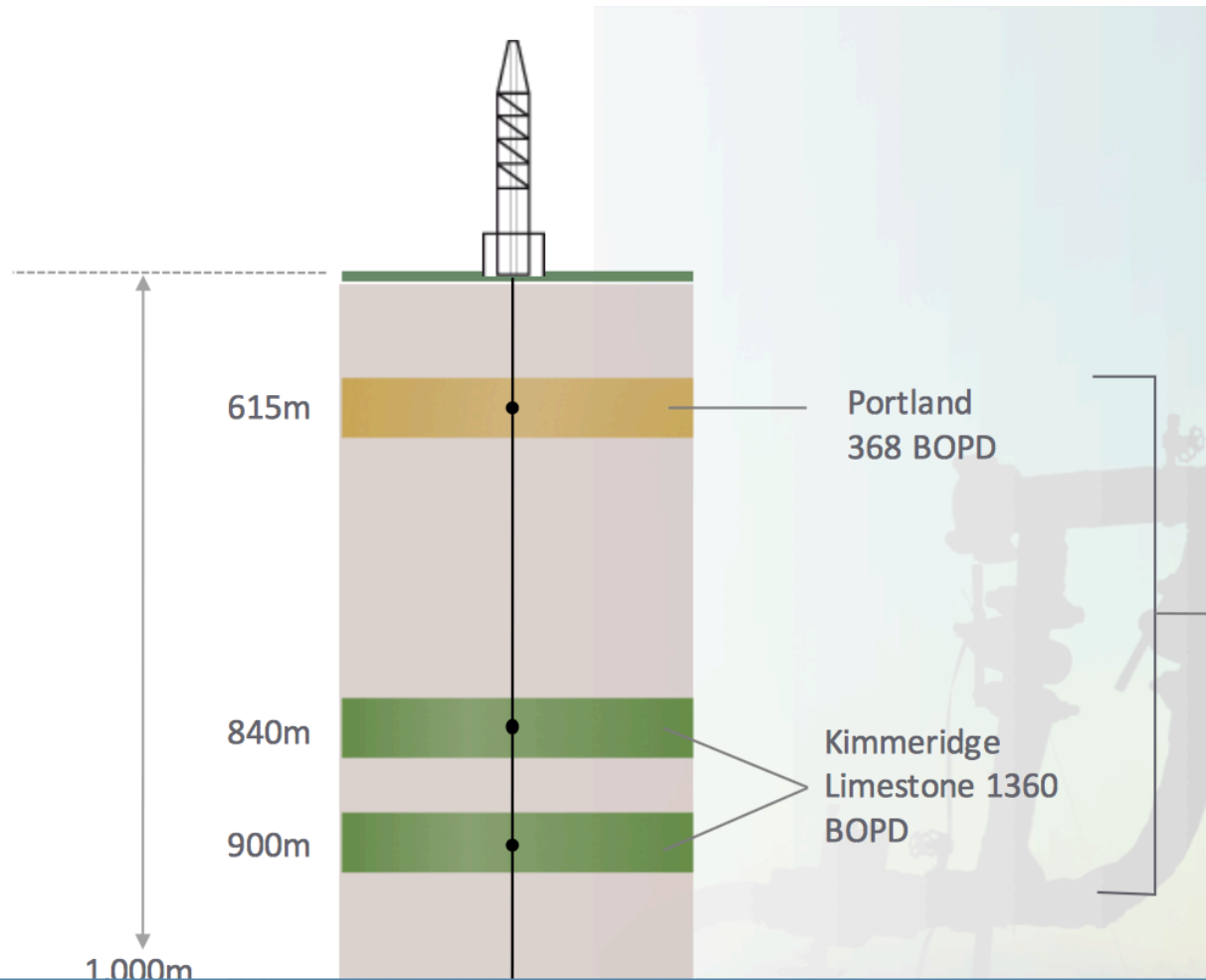
HORSE HILL LICENCES: 55 Square miles

11 billion barrels

1 billion barrels Kimmeridge Limestone

Ref: Courtesy – UKOG Plc

It all Began with the “Gatwick Gusher”!



Kimmeridge Limestone Oil:
From science project to
commercial reality

- Aggregate oil rate 1,688 BOPD ~ 8.5% of total UK onshore daily oil production
- North Sea rates
- Highest rate of any UK Discovery Well

Gatwick Gusher Development Plans

- **Develop and control the KL oil play**
- **Demonstrate KL commerciality: Move Horse Hill-1 KL into production by end 2018**
 - HH-1 production tests in 2017
 - HH-1/1z production wellbores in 2018
 - KL production target >1000 bopd by end 2018
- **Replicate HH-1 within wider basin “sweet-spot”**
 - BB-1 in 2017, approvals granted
 - H-1 in 2017, approvals granted
 - GB-3 in 2018, site selected
- **Consolidate and increase licence holdings**
- **Bring HH Portland to production by end 2018**

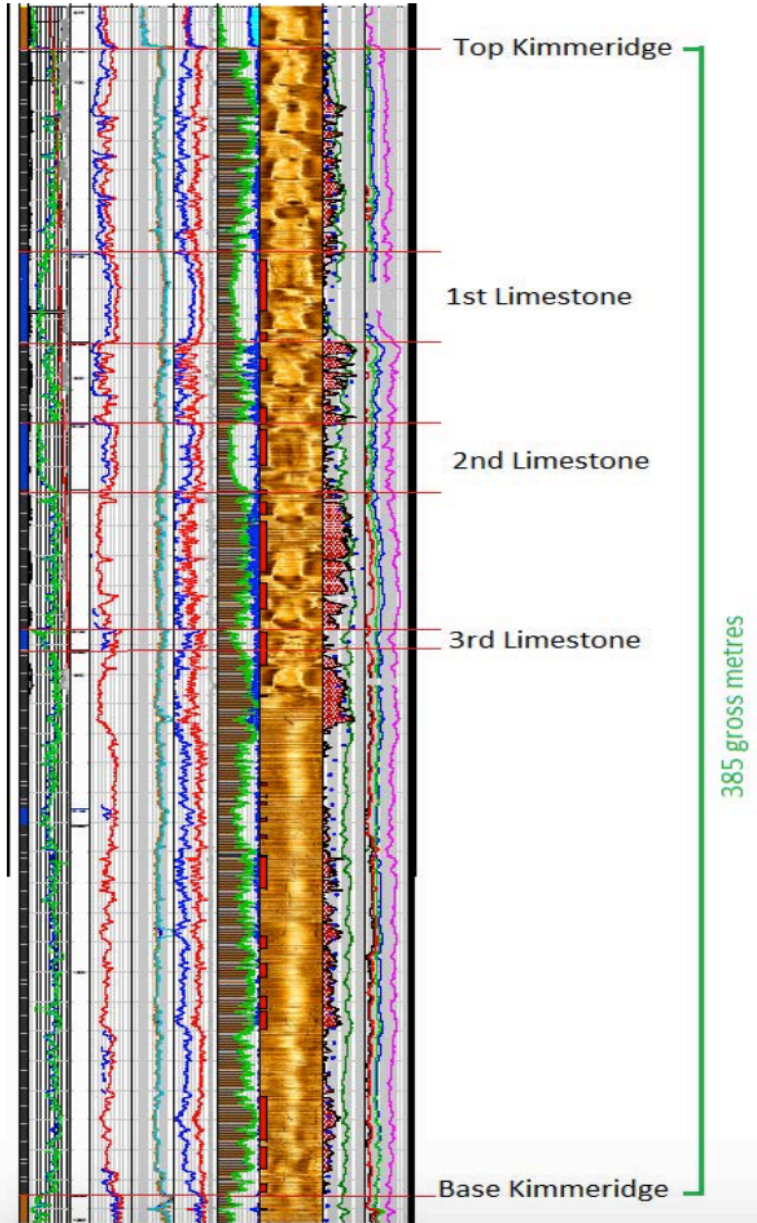


Brockham Oil Field – Looks Better than the Gatwick Gusher!

Focus

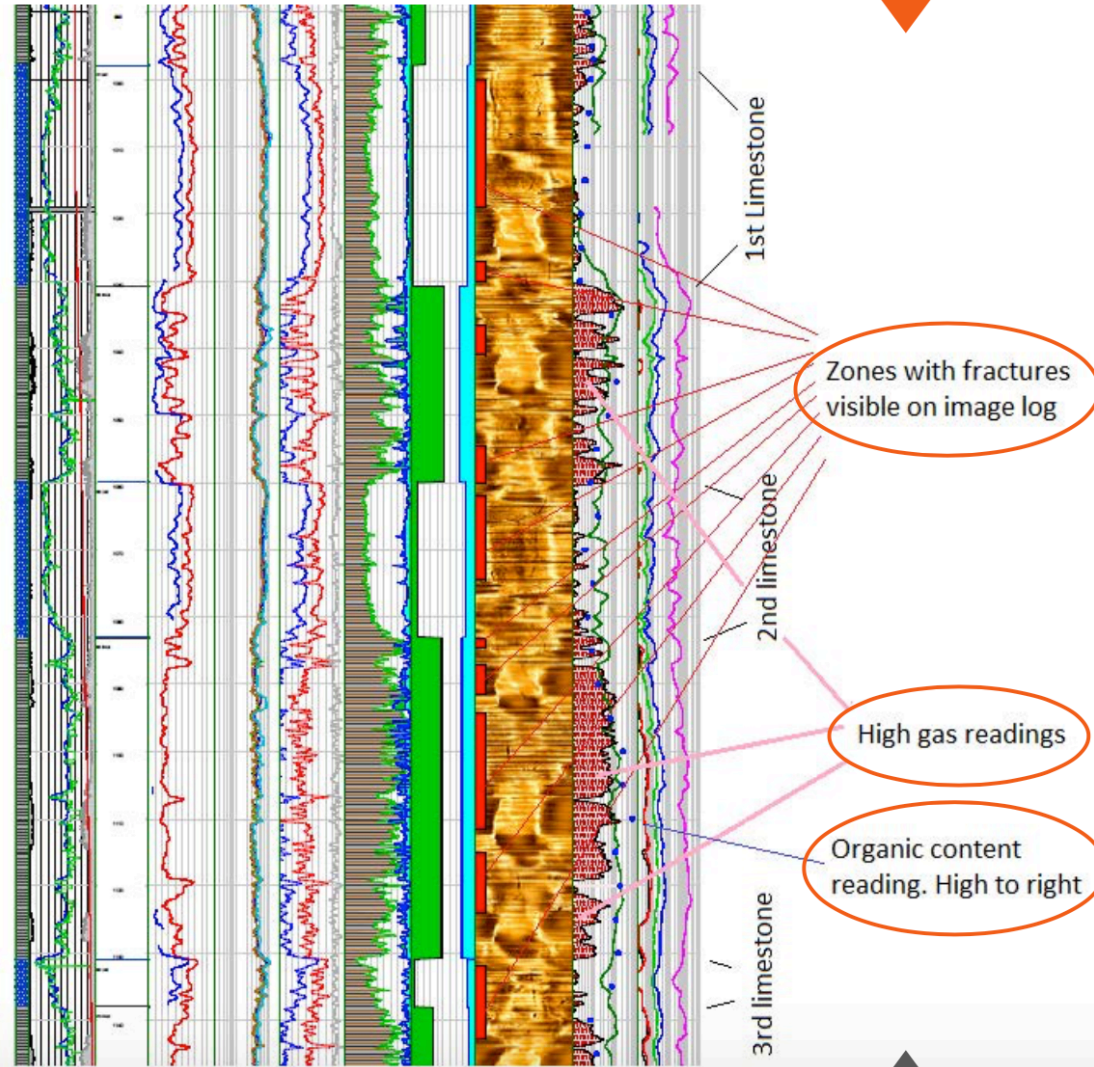
First commercial Kimmeridge production

Brockham Logging Results



- A **thick 385m TVD** gross Kimmeridge shale with limestone intervals section
- **3 limestone** intervals
- ~250m with higher organic content
- Higher organic content in the mid section; above, between and below the limestones
- **Multiple fractured sections** in both limestones and shales

LOGGING RESULTS KIMMERIDGE

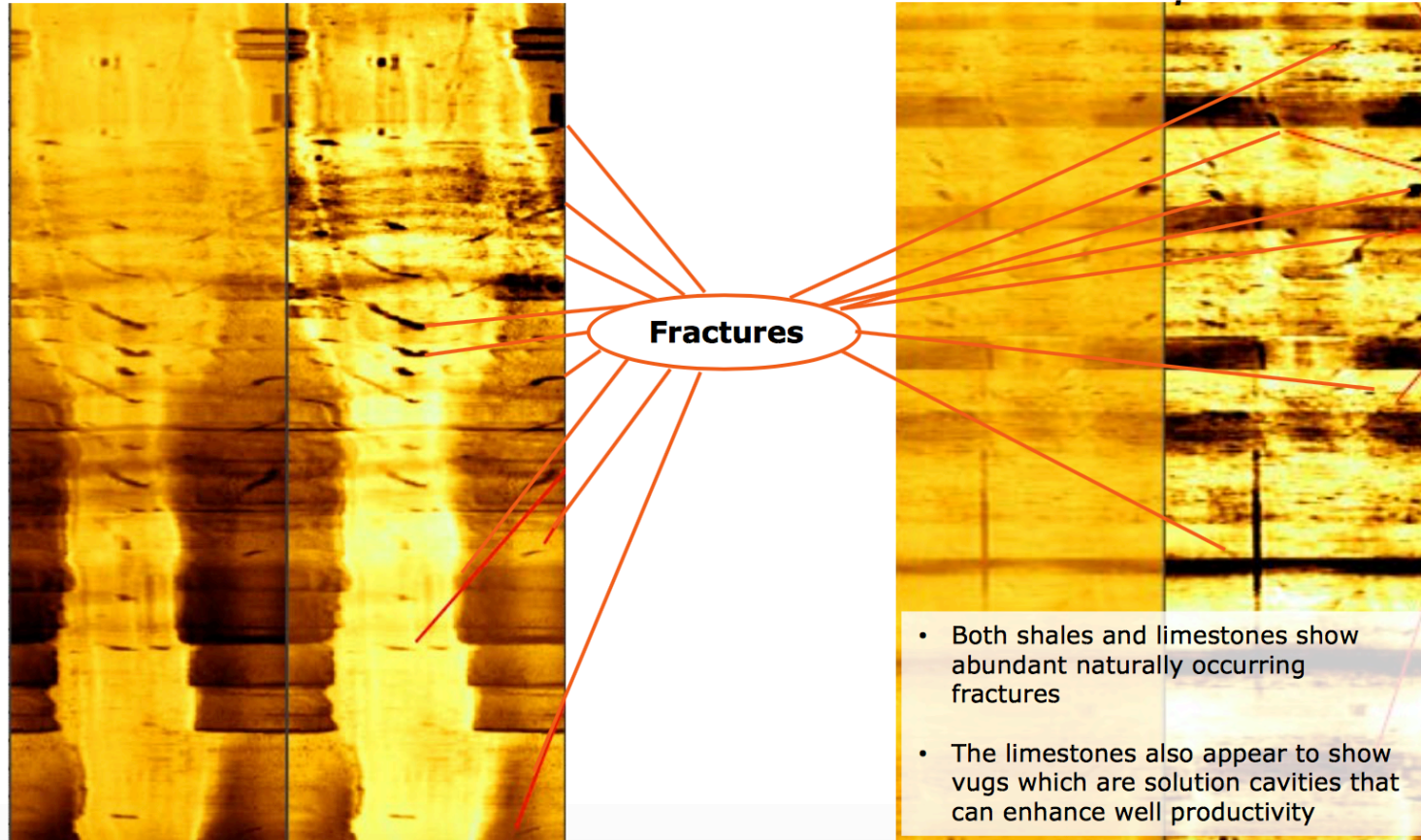


- Limestones and shales are naturally fractured
- Zones with high gas content correspond with high total organic content (TOC)
- Shale sections also have thin fractured limestones

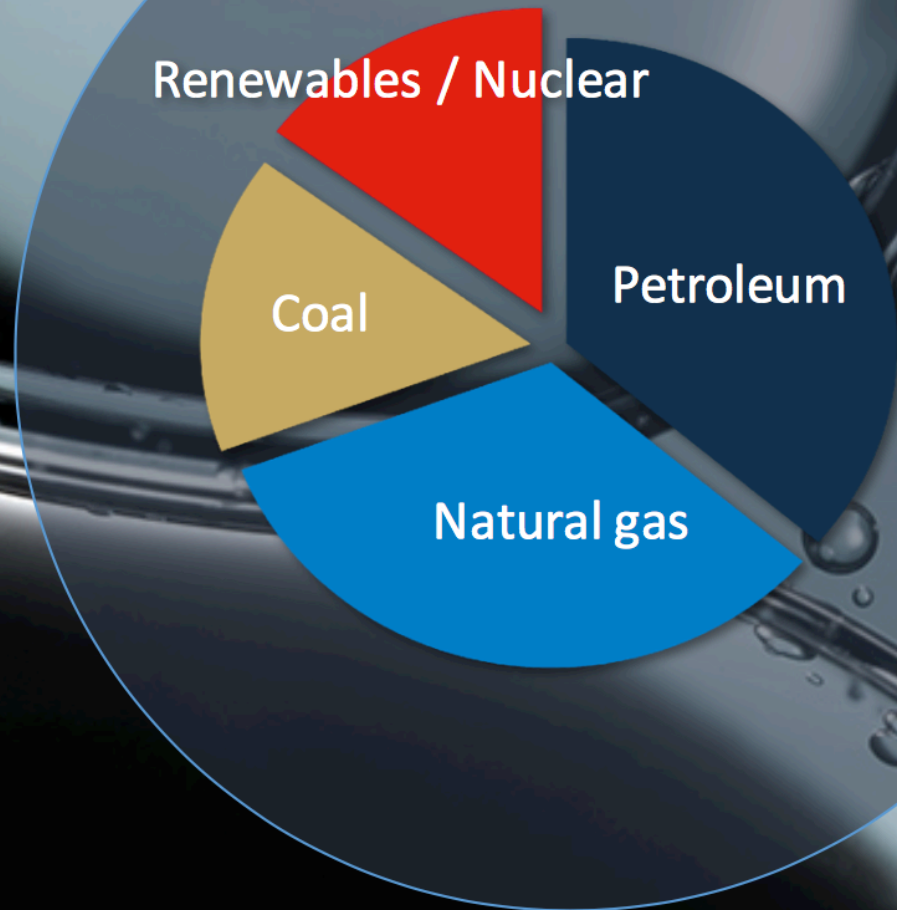
STRONG FRACTURE IDENTIFICATION

Limestone bands showing abundant naturally occurring fractures

Log interval representing a section with interbedded shales and limestones seen clearly in the bands of different rock texture



UK Energy Consumption 2014



- Oil accounts for 40% of UK energy demand
- Unlike renewables, coal, natural gas, oil is not used primarily to generate electricity
- Used for land, sea, air transport, plastics, pharmaceuticals etc essential for modern life

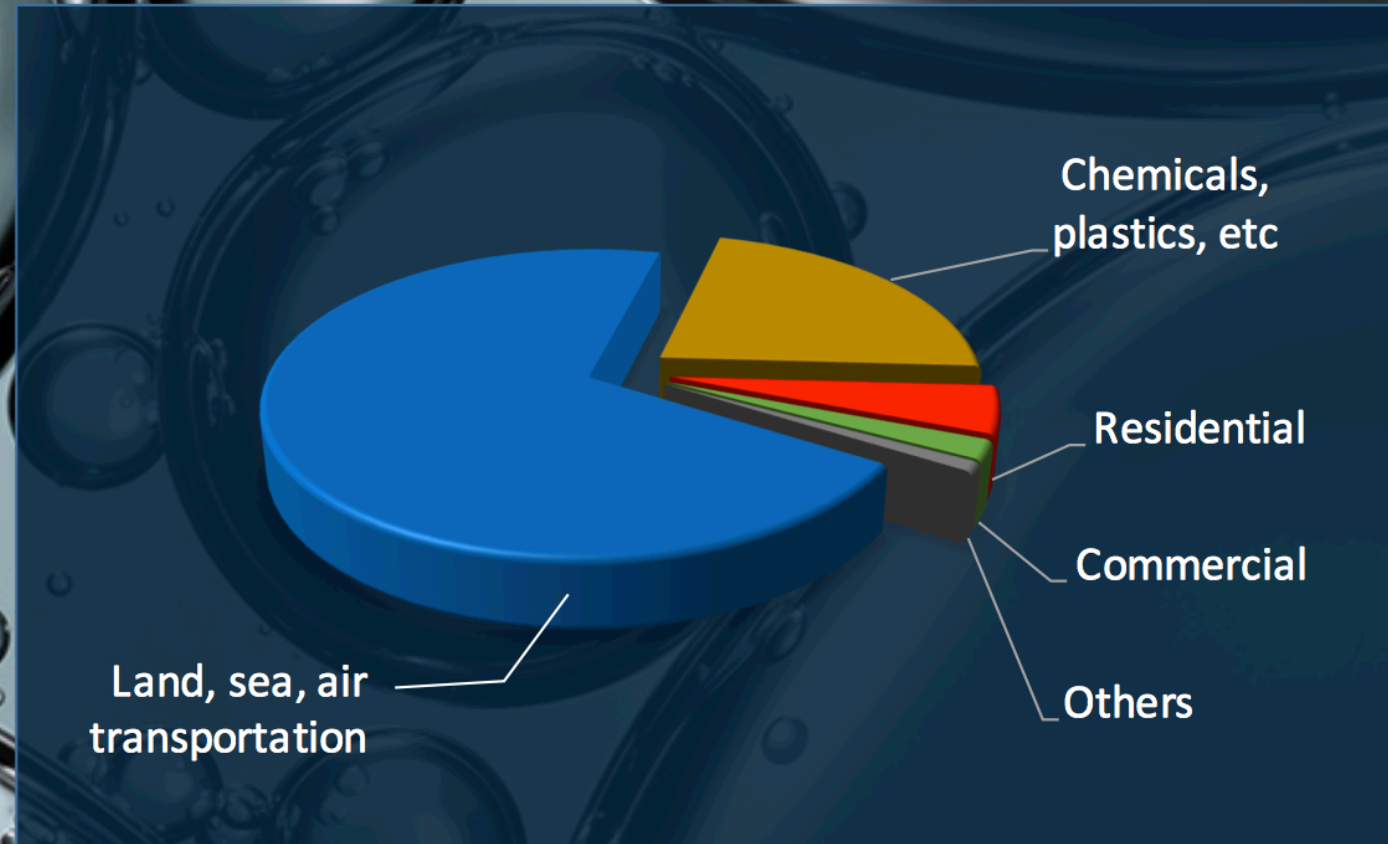
RENEWABLES

- Renewables generate electricity. Oil is not used for electric power generation
- Renewable projects need oil based products & components
- Renewables cannot replace oil

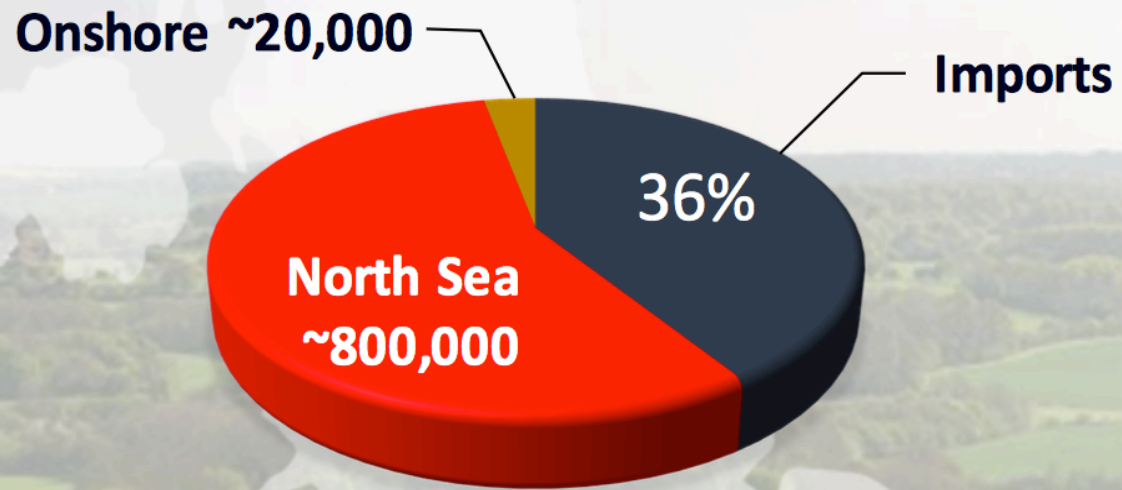
4

Britain consumes
**~1.4 million
barrels per day**

- 70% of it is used as fuel for transport.
- 30% of it is used as petrochemical feedstock
- None of it is used for electricity generation

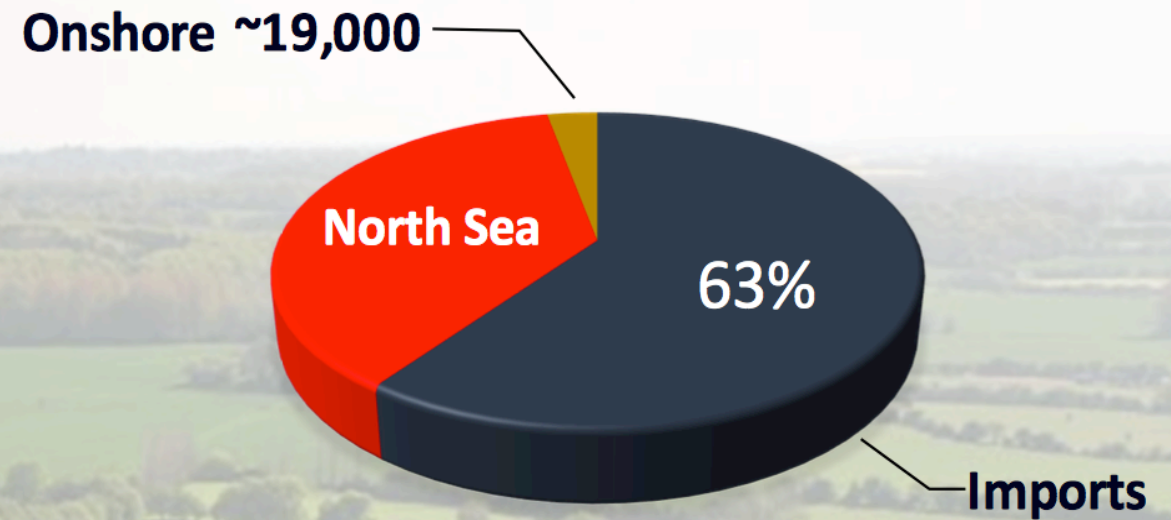


2016 (BOPD)



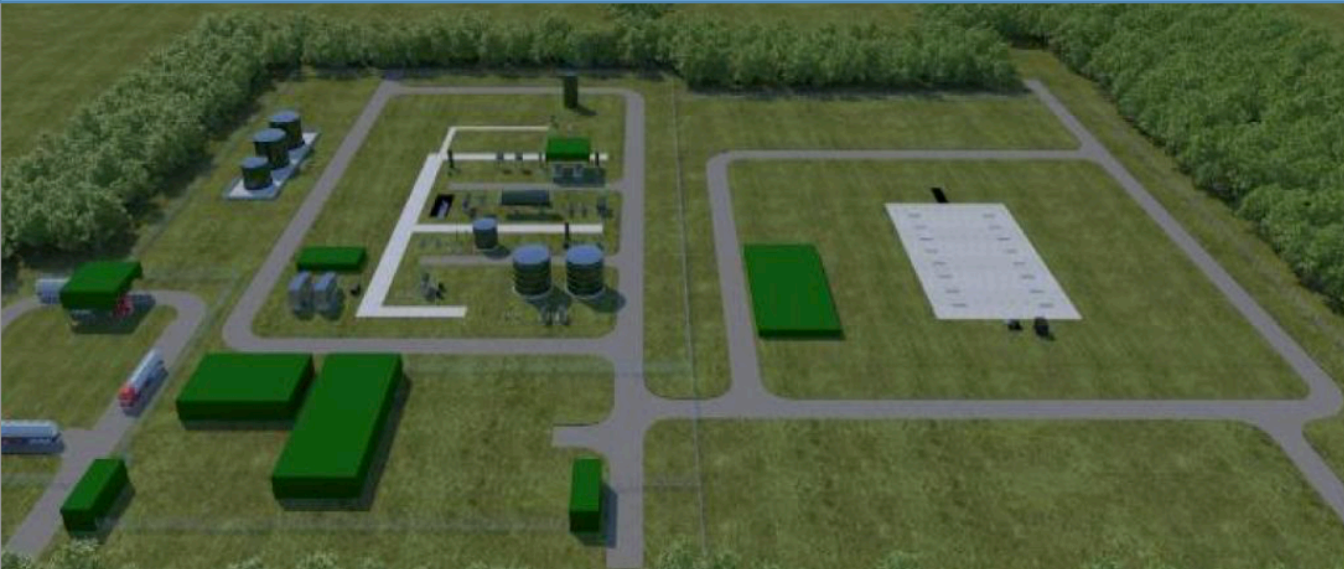
Net oil import dependency
36%

2030 (BOPD)

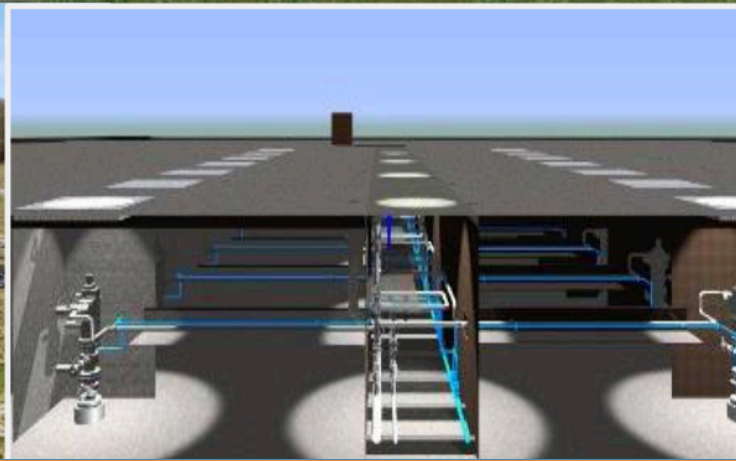


Net oil import dependency
63%

The UK's Future Oil Production Look – Low Visual Impact.



- Multiple producing wells in 3-6 acre sites
- Initial production target 1000 bopd/well, resources target 1 MMbbl/well
- Use biodegradable 'plant-starch' drilling mud
- Wells and pumps below ground level
- Low-rise storage tanks - lower profile than rural grain-silos
- Control production to reduce peak oil road tanker impact (~200 bbl/tanker)
- Select brown field sites and locations near A-roads/rail-links that avoid villages, houses, small roads, AONB and SDNP



Doriemus Plc

Listed on London's NEX Exchange

Ticker: DOR

Shares on Issue: 12,526,285,711 ordinary shares

Website: www.doriemus.co.uk

Important Information

This presentation is being made on behalf of Doriemus PLC (the “Company”). This presentation has not been approved for issue as a financial promotion for the purposes of section 21 of the Financial Services and Markets Act (2000, as revised) (“FSMA”).

Neither the presentation, nor any part of it, nor anything contained or referred to in it, nor the fact of its distribution, should form the basis of or be relied on in any connection with or act as an inducement in relation to a decision to purchase or subscribe for or enter into any contract or make any other commitment whatsoever in relation to any such securities. Details included in this presentation are subject to updating, revision, verification and amendment, and refer to events as having occurred which have not occurred at the date of this presentation, but which are expected to happen in the future. This presentation does not constitute a recommendation regarding the securities of the Company.

An investment in the Company involves significant risks, and several risk factors, including. These could have a material negative impact the Company’s future performance, results and financial standing. This communication should not be considered as the giving of investment advice by any member of the Group or any of their respective shareholders, directors, officers, agents, employees or advisors. The information may contain forward-looking statements relating to the Company that are based on management’s current expectations, estimates and projections about the Company . Forward-looking statements in the information are subject to known and unknown risks, uncertainties and other factors that may cause the Company’s ‘ actual results, the level of activity, performance or achievements to be materially different from those expressed or implied by such forward-looking statements. All forward-looking statements are expressly qualified in their entirety by this cautionary statement. The information does not constitute a recommendation regarding any decision to sell or purchase securities in the Company. No representation or warranty, express or implied, is given by or on behalf of the Company, or its shareholders, directors, officers or employees or any other person as to the accuracy or completeness of the information and no liability is accepted for any such information (including in the case of negligence, but excluding any liability for fraud). The information is directed only at persons who fall within the exemptions contained in Articles 19 and 49 of the Financial Services and Markets Act 2000 (Financial Promotion) Order 2005 (such as persons who are authorized or exempt persons within the meaning of the Financial Services and Markets Act 2000 and certain other persons having professional experience relating to investments, high net worth companies, unincorporated associations or partnerships, and the trustees of high value trusts) and persons to whom communication of the information may otherwise lawfully be made. Persons of any other description, including those that do not have professional experience in matters relating to investments, should not rely or act upon the information.

By receiving and/or attending this presentation, you agree to be bound by the restrictions in this disclaimer.

If you are in any doubt about the contents of this presentation, you should consult a person authorised under FSMA who specialises in advising on the acquisition of shares and other securities.